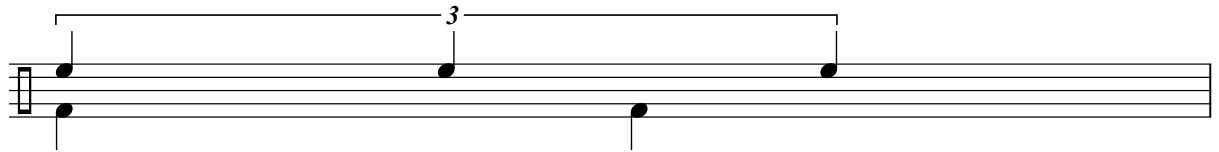


Polyrhythms: 3 against 2

Nobuki Takamen

Counter Rhythm



Basic Pulse

Subdivision:

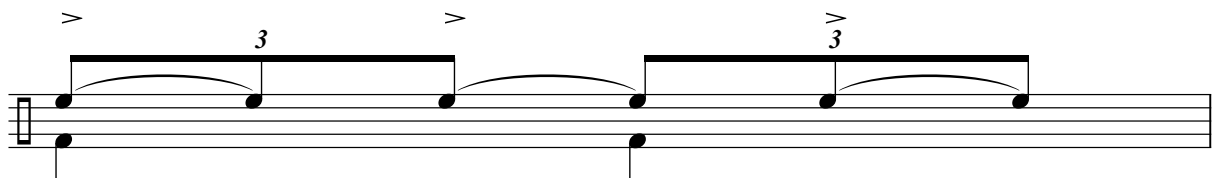
1 & a 2 & a



Basic Pulse:

1 2

Grouping: 2 Triplets



Polyrhythms: 5 against 2

Nobuki Takamen

Counter Rhythm

Musical notation showing a counter rhythm of five eighth notes beamed together, with a '5' above the group, and a basic pulse of two eighth notes. The counter rhythm is on the upper staff and the basic pulse is on the lower staff.

Basic Pulse

Subdivision: 1 e & a ta 2 e & a ta

Musical notation showing two groups of five eighth notes beamed together, each with a '5' above it, and a basic pulse of two eighth notes. The subdivision is on the upper staff and the basic pulse is on the lower staff.

Basic Pulse:

1 2

Grouping: 2 Quintuplets

Musical notation showing two groups of five eighth notes beamed together, each with a '5' above it and an accent (>) above the first note of each group. The grouping is on the upper staff and the basic pulse is on the lower staff.

Polyrhythms: 7 against 2

Nobuki Takamen

Counter Rhythm

Musical notation showing a counter rhythm of seven eighth notes over a basic pulse of two eighth notes. The counter rhythm is indicated by a bracket with the number 7 above it. The basic pulse is indicated by a bracket with the number 2 below it.

Basic Pulse

Subdivision:

Musical notation showing the subdivision of the counter rhythm into two groups of seven eighth notes, each indicated by a bracket with the number 7 above it. The basic pulse is indicated by a bracket with the number 2 below it. The first pulse is labeled '1' and the second pulse is labeled '2'.

Basic Pulse:

Grouping: 2 Septuplets

Musical notation showing two groups of seven eighth notes, each indicated by a bracket with the number 7 above it. Each eighth note is marked with an accent (>). The groups are separated by a double bar line.